

1352 ALLEN AVE.

4 BED + MAIN FLOOR OFFICE, 4 BATH + 2-CAR PORT COCHERE
PLUS CARRIAGE HOME OVER 2-CAR GARAGE W/OPTIONAL 1 BED/1 BATH FINISH

Porchfront
HOMES

Artist's Rendering



(Detached Garage & Carriage House behind Carport)

(Attached Carport for 2 cars)

eighty
30
realty

DEANNA FRANCO
(720) 422-5131
8030realty.com

Square Footage

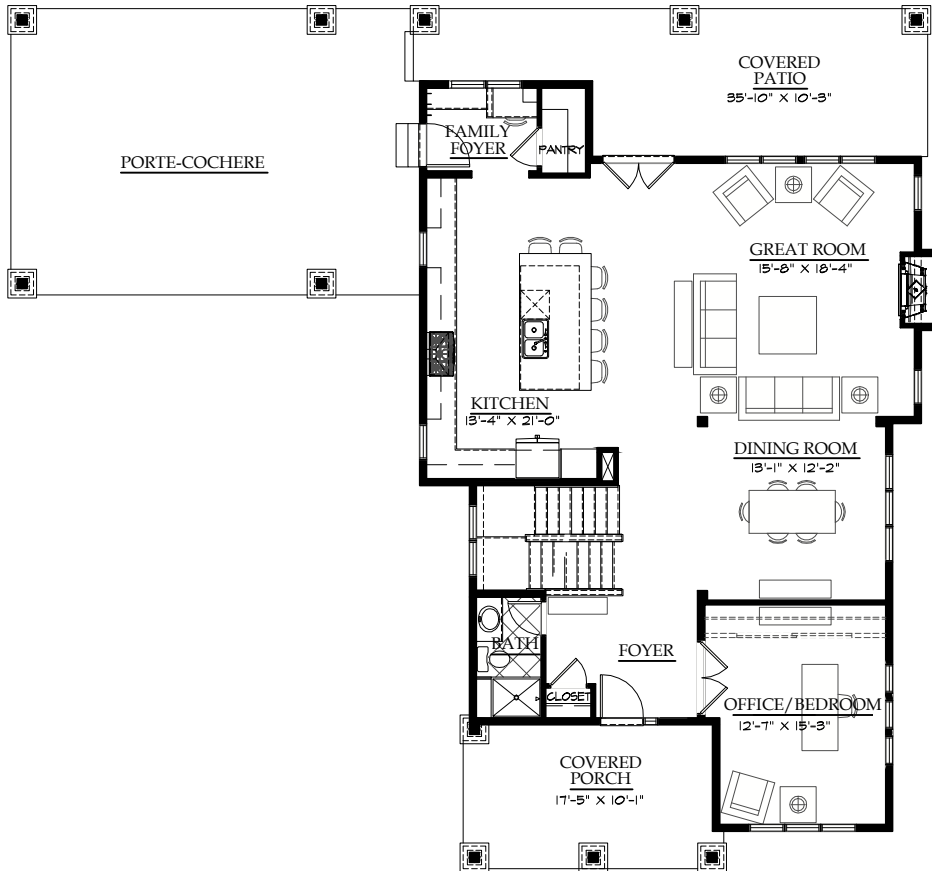
TOTAL MAIN HOUSE	4,132	CARRIAGE HOUSE	533
FINISHED	2,879	GARAGE	753
MAIN	1,434	PORT COCHERE	564
UPPER	1,445	PORCHES/BALCONIES	611
BASEMENT	1,253	LOT SIZE	18,120

Floor plans, design, dimensions, square footage, window locations are approximate, not to scale, may not reflect the actual finished product, and are subject to change without notice. All designs are the property of Porchfront Homes, and may not be used for any purpose unless expressly consented to in writing. To constantly bring you the best product, we reserve the right to make changes to our plans without notice. The plan shown may include optional features.

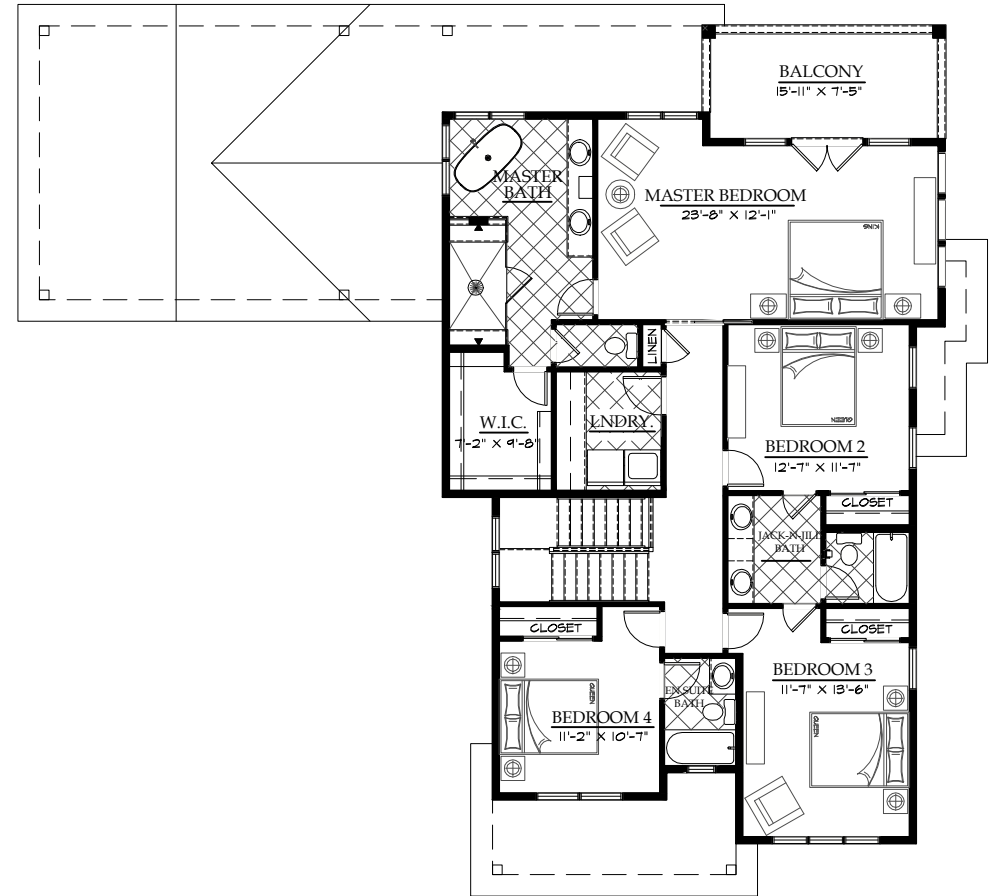
1352 ALLEN AVE.

4 BED + MAIN FLOOR OFFICE/BED, 4 BATH + 2-CAR PORT COCHERE
 PLUS CARRIAGE HOME OVER 2-CAR GARAGE W/OPTIONAL 1 BED/1 BATH FINISH

Porchfront
 HOMES



MAIN LEVEL 1,434 SF



UPPER LEVEL 1,445

eighty
30
 realty

DEANNA FRANCO
 (720) 422-5131
 8030realty.com

Square Footage

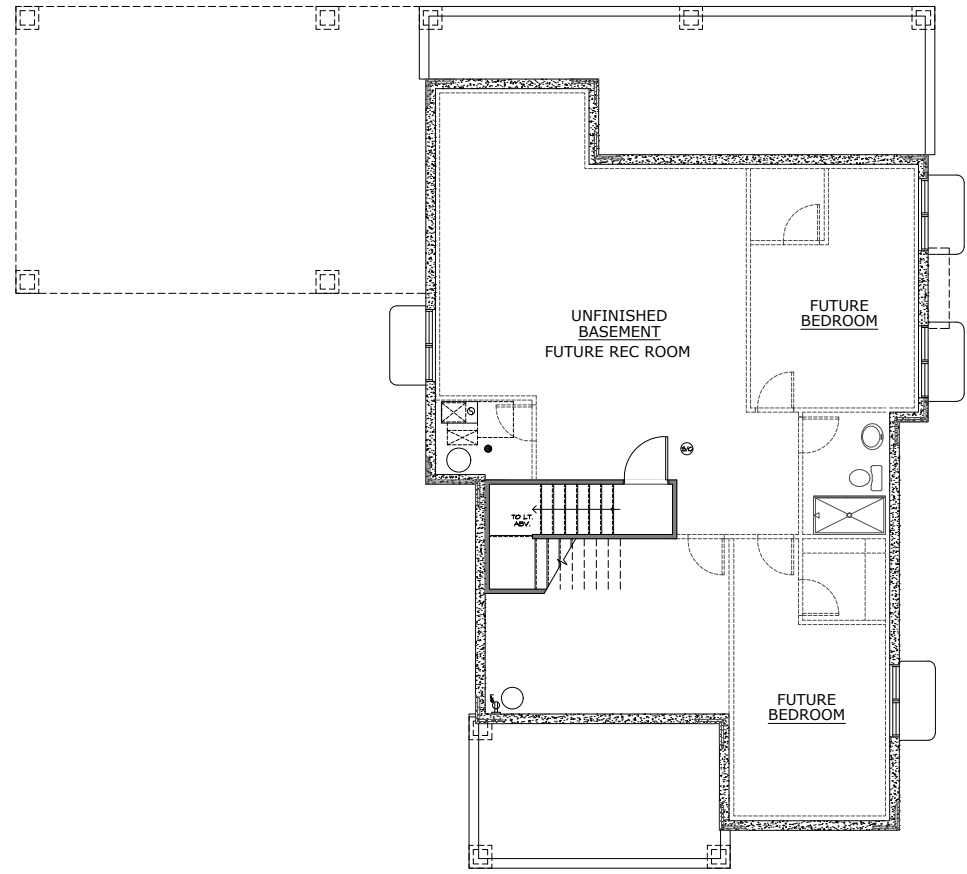
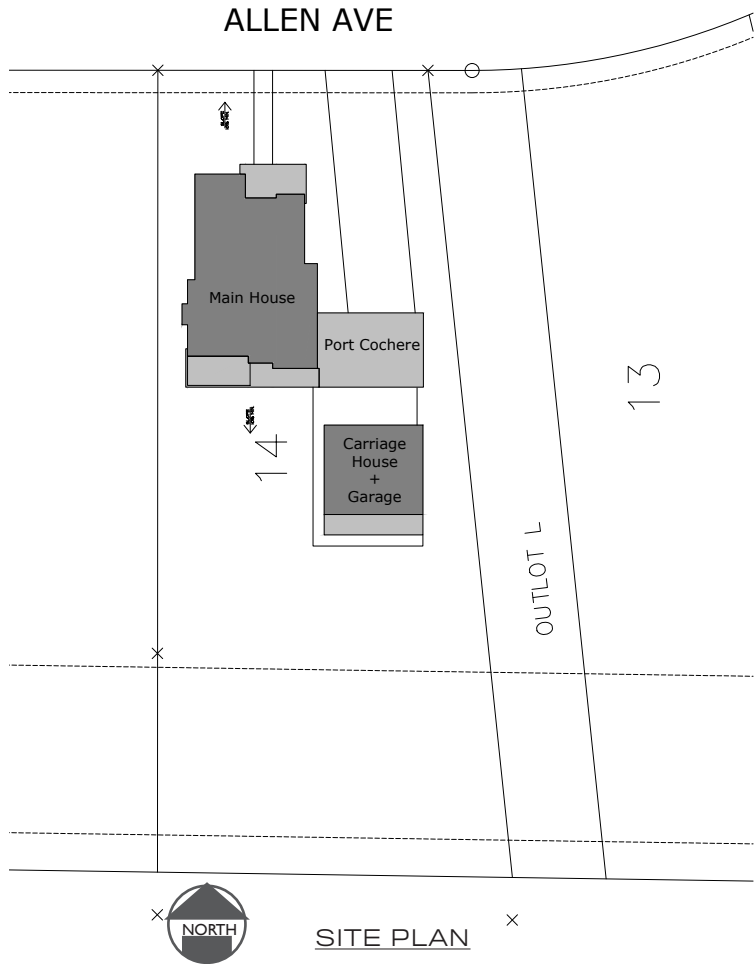
TOTAL MAIN HOUSE	4,132	CARRIAGE HOUSE	533
FINISHED	2,879	GARAGE	753
MAIN	1,434	PORT COCHERE	564
UPPER	1,445	PORCHES/BALCONIES	611
BASEMENT	1,253	LOT SIZE	18,120

Floor plans, design, dimensions, square footage, window locations are approximate, not to scale, may not reflect the actual finished product, and are subject to change without notice. All designs are the property of Porchfront Homes, and may not be used for any purpose unless expressly consented to in writing. To constantly bring you the best product, we reserve the right to make changes to our plans without notice. The plan shown may include optional features.

1352 ALLEN AVE.

4 BED + MAIN FLOOR OFFICE, 4 BATH + 2-CAR PORT COCHERE
 PLUS CARRIAGE HOME OVER 2-CAR GARAGE W/OPTIONAL 1 BED/1 BATH FINISH

Porchfront
 HOMES



BASEMENT 1,253 SF

eighty
30
 realty

DEANNA FRANCO
 (720) 422-5131
 8030realty.com

Square Footage

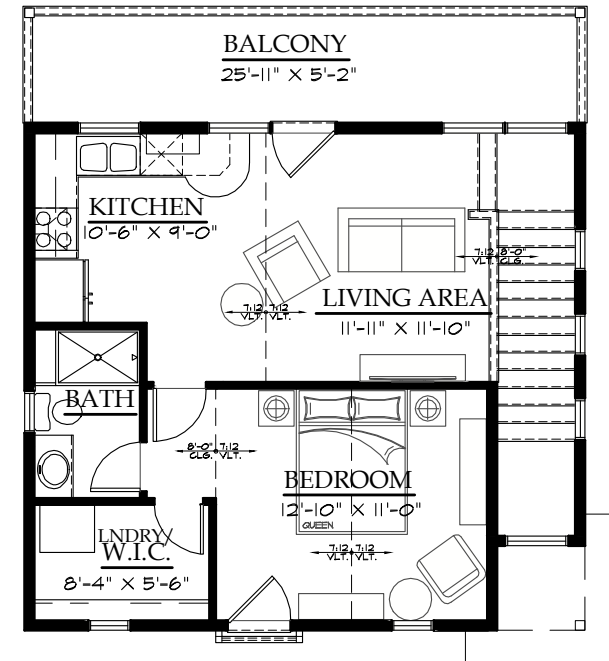
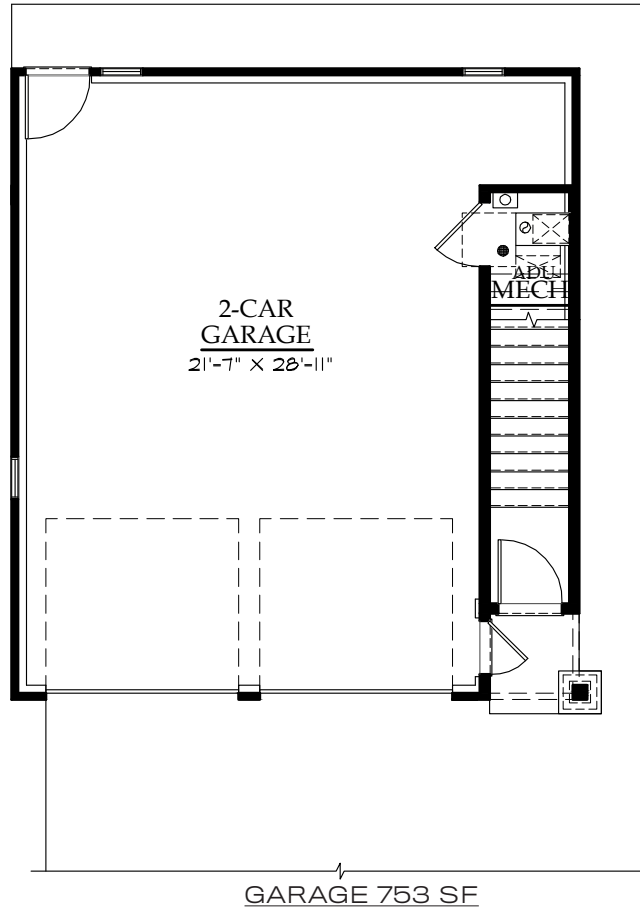
TOTAL MAIN HOUSE	4,132	CARRIAGE HOUSE	533
FINISHED	2,879	GARAGE	753
MAIN	1,434	PORT COCHERE	564
UPPER	1,445	PORCHES/BALCONIES	611
BASEMENT	1,253	LOT SIZE	18,120

Floor plans, design, dimensions, square footage, window locations are approximate, not to scale, may not reflect the actual finished product, and are subject to change without notice. All designs are the property of Porchfront Homes, and may not be used for any purpose unless expressly consented to in writing. To constantly bring you the best product, we reserve the right to make changes to our plans without notice. The plan shown may include optional features.

1352 ALLEN AVE.

4 BED + MAIN FLOOR OFFICE, 4 BATH + 2-CAR PORT COCHERE
PLUS CARRIAGE HOME OVER 2-CAR GARAGE W/OPTIONAL 1 BED/1 BATH FINISH

Porchfront
HOMES



eighty
30
realty

DEANNA FRANCO
(720) 422-5131
8030realty.com

Square Footage

TOTAL MAIN HOUSE	4,132	CARRIAGE HOUSE	533
FINISHED	2,879	GARAGE	753
MAIN	1,434	PORT COCHERE	564
UPPER	1,445	PORCHES/BALCONIES	611
BASEMENT	1,253	LOT SIZE	18,120

Floor plans, design, dimensions, square footage, window locations are approximate, not to scale, may not reflect the actual finished product, and are subject to change without notice. All designs are the property of Porchfront Homes, and may not be used for any purpose unless expressly consented to in writing. To constantly bring you the best product, we reserve the right to make changes to our plans without notice. The plan shown may include optional features.