



FIRST FLOOR PLAN

"Juniper"

FIRST FLOOR 1,008 SQ. FT.
 SECOND FLOOR 967 SQ. FT.
 TOTAL AREA 1,975 SQ. FT.





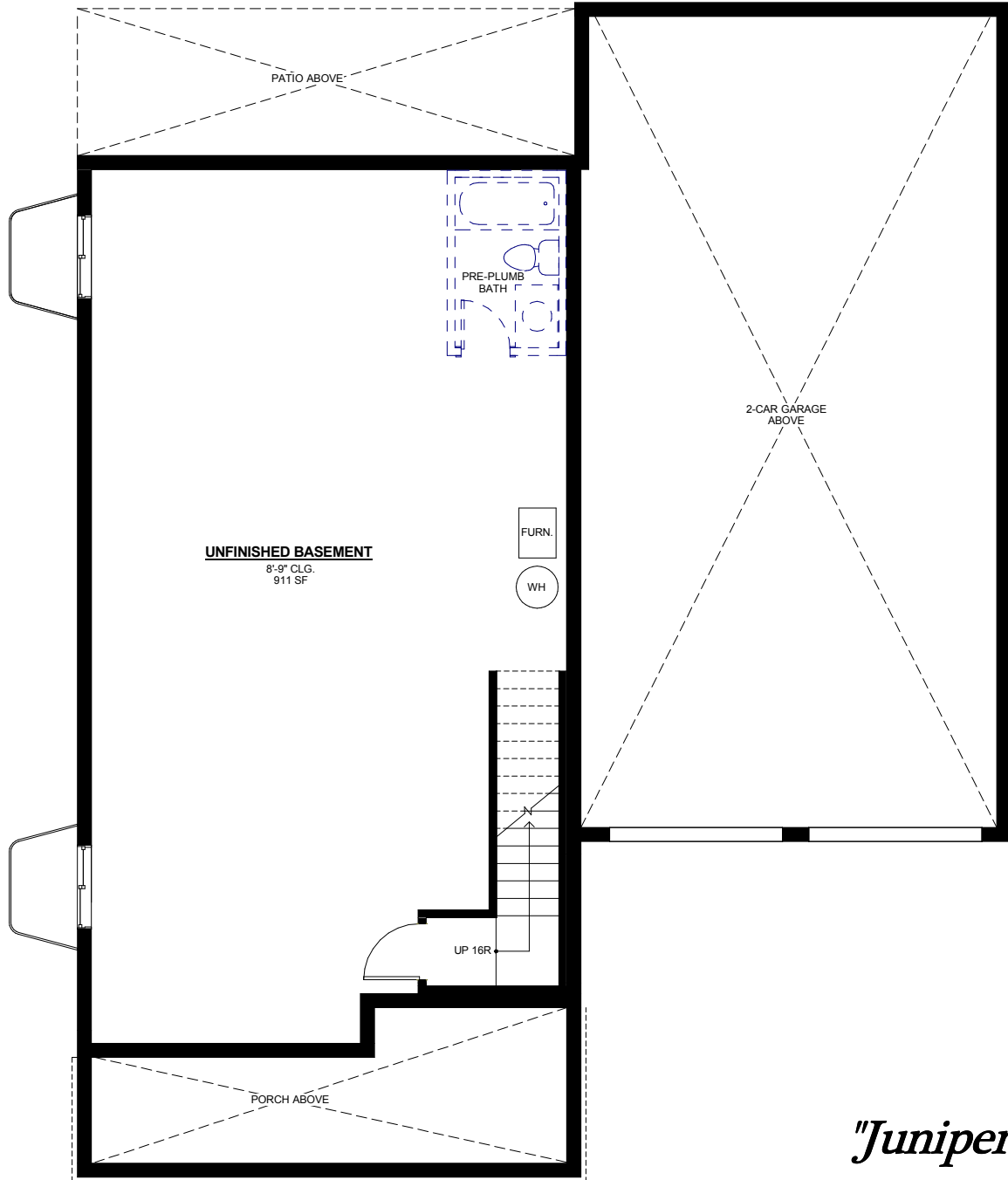
SECOND FLOOR PLAN

"Juniper"

FIRST FLOOR 1,008 SQ. FT.
 SECOND FLOOR 967 SQ. FT.
 TOTAL AREA 1,975 SQ. FT.

Porchfront
HOMES
 . . .
 TIMELESS DESIGNS
 TRADITIONAL VALUE





BASEMENT PLAN

"Juniper"

FIRST FLOOR	1,008 SQ. FT.
SECOND FLOOR	967 SQ. FT.
TOTAL AREA	1,975 SQ. FT.

Porchfront
HOMES

TIMELESS DESIGNS
TRADITIONAL VALUE