

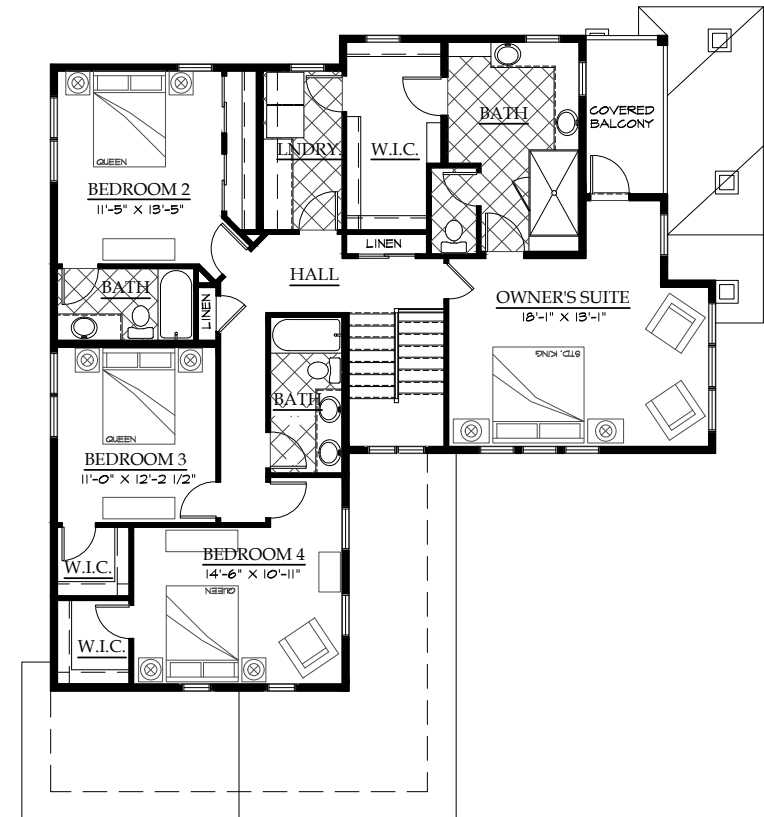
1458 GREENING AVE.

4 BED + OFFICE, 4 BATH, 2-CAR GARAGE

Porchfront
HOMES



MAIN LEVEL



UPPER LEVEL

eighty
30
realty

DEANNA FRANCO
(720) 422-5131
8030realty.com

Square Footage

TOTAL	3,515	BASEMENT	943
FINISHED	2,572	GARAGE	615
MAIN	1,110	COVERED PORCHES	405
UPPER	1,462	LOT SIZE	9,169

Floor plans, design, dimensions, square footage, window locations are approximate, not to scale, may not reflect the actual finished product, and are subject to change without notice. All designs are the property of Porchfront Homes, and may not be used for any purpose unless expressly consented to in writing. To constantly bring you the best product, we reserve the right to make changes to our plans without notice. The plan shown may include optional features.

1458 Greening Ave Lot 22

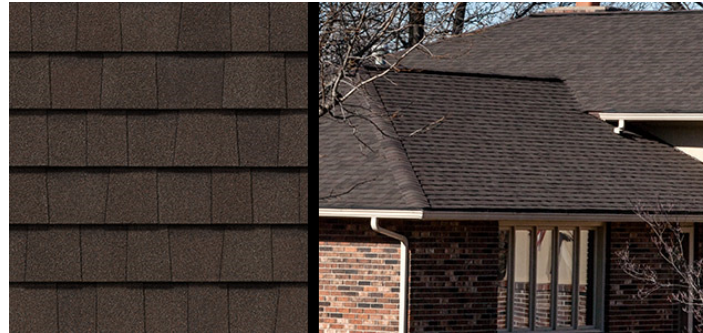
Body : Roycroft Copper Red

Trim: Alabaster SW7008



Front Door, garage Door, shingles and corbels: Mountain Ash Stain

1458 Greening Ave



Roof Rustic Brown



Shingles Front Door and Garage Door Mountain Ash Stain



Trim Alabaster SW7008



Body : Roycroft Copper SW2839



Masonry Base: Cobble Brown